

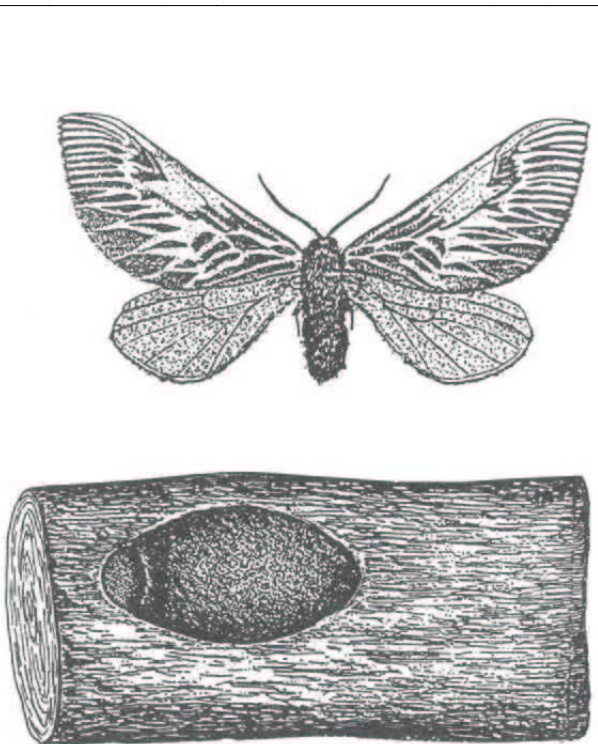


CUT

FOLD

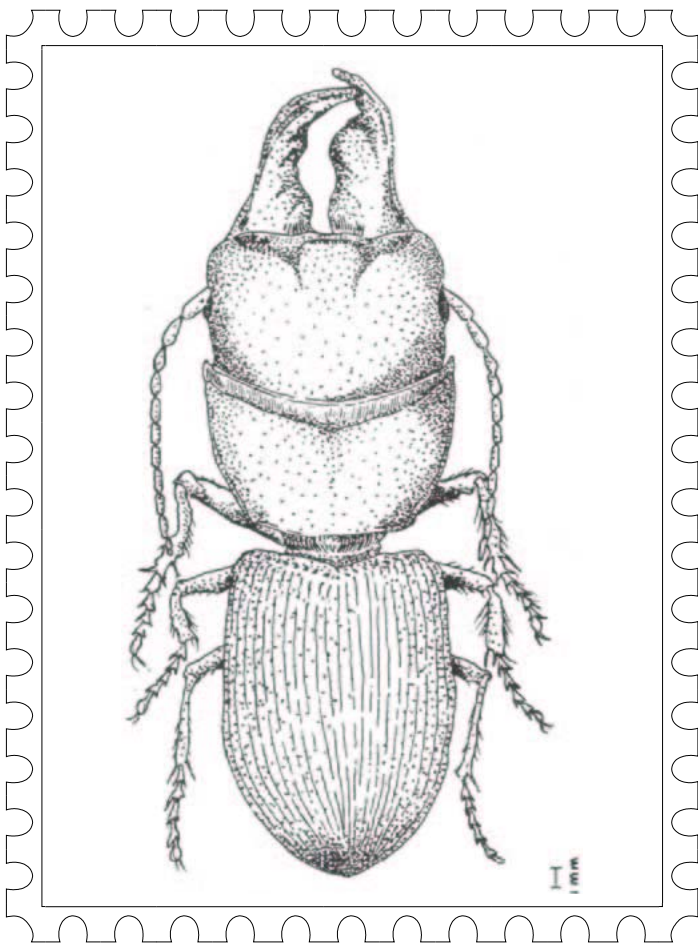
- Scientific name:** *Lamponius portoricensis*
- Common name:** English: Walking Stick
Español: Palito Viviente
- Habitat/range:** Plant and tree leaves.
In upper forest. North/
Central/South America,
Greater/Lesser Antilles.
- Diet:** Folivores; plant and tree
leaves.
- Fun fact:** Walking Sticks can
change color; Light
green in the day-time,
dark green at night!

CUT



FOLD

- Scientific name:** *Megalopyge krugi*
- Common name:** English: Flannel Moth
Español: Plumilla
- Habitat/range:** Plants and flowers in
Mid-level/Upper forest.
Throughout North/South
Central America,
Caribbean Islands.
- Diet:** Larvae eat leaves,
adults feed on flower
nectar.
- Fun fact:** Flannel moths can "coil"
their proboscis (feeding
tube) when not in use
sucking nectar from
flowers!



CUT

FOLD

Scientific name: *Antilliscarus megacephalus*

Common name: English: Ground Beetle
Español: Escarabajo

Habitat/range: In wet forests at high elevations. Native, Puerto Rico.

Diet: Dead insects, caterpillars, beetle larvae, maggots.

Fun fact: The biggest beetle in the Antilles Islands, they hide under leaf litter during the day and come out to feed at night!

CUT



FOLD

Scientific name: *Schitzocerina krugii*

Common name: English: Sawfly
Español:

Habitat/range: Found on or near the leaves of the Seagrape plant. Puerto Rico, Luquillo forest.

Diet: Plant leaves.

Fun fact: Adult Sawflies look like wasps, but they don't sting. Fore and back wings hook together when flying!